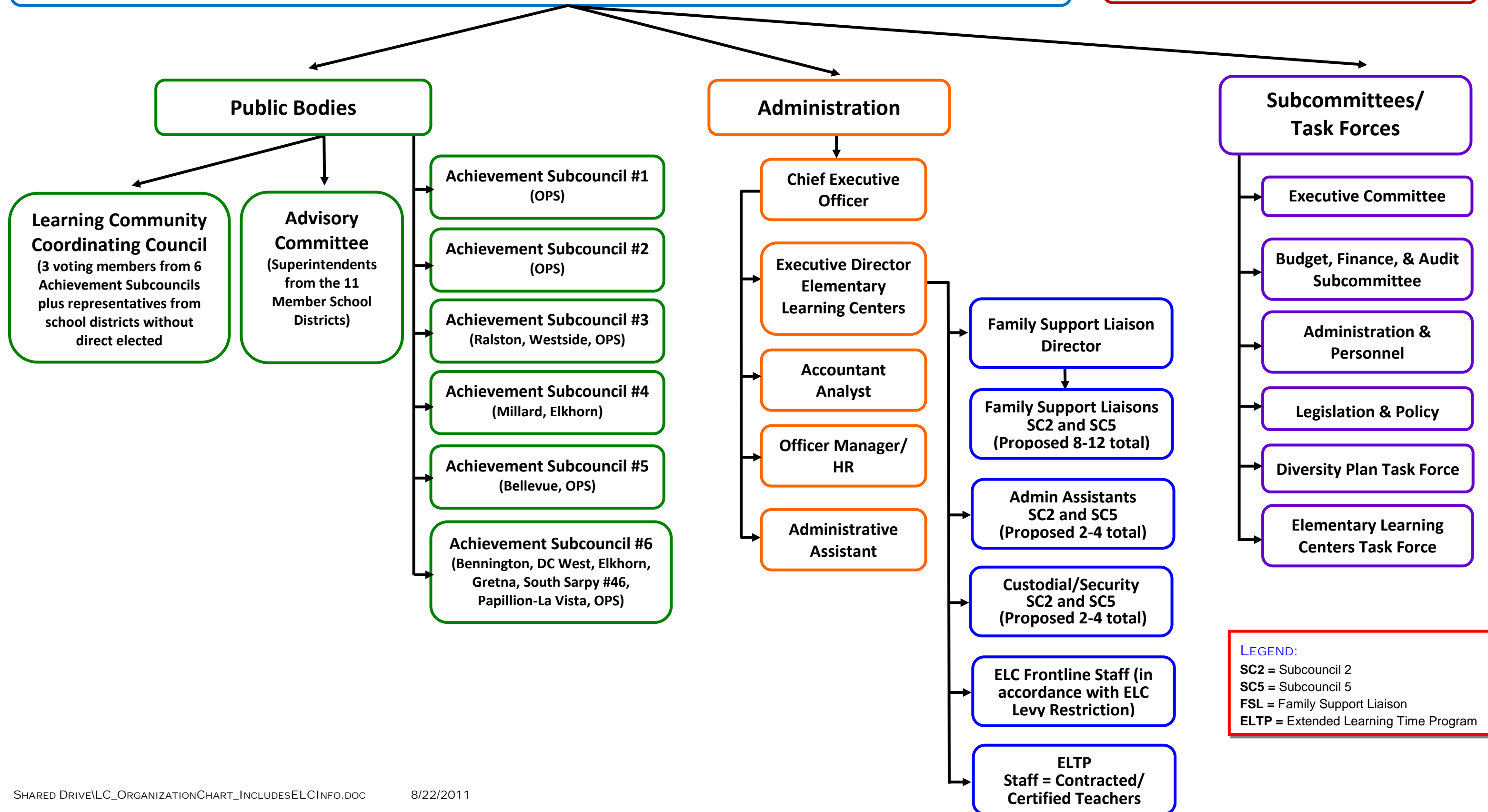


LEARNING COMMUNITY ORGANIZATION STRUCTURE OVERVIEW

Learning Community of Douglas and Sarpy Counties

Serving approx. 107,000 (43,000 F & R Lunch) public school children in 198 buildings in 11 school districts



LEGEND:
 SC2 = Subcouncil 2
 SC5 = Subcouncil 5
 FSL = Family Support Liaison
 ELTP = Extended Learning Time Program